



13 - 18
Alexander
Close

**Alexander Close
Twickenham**

£425,000

ChaseBuchanan

Key Features

- Viewings accompanied by Chase Buchanan
- First floor flat
- Bright, neutral décor
- Two double bedrooms
- Communal gardens
- Residents parking
- Chain free
- Desirable location
- Leasehold
- Council Tax Band C

Description

This first floor apartment has been well cared for throughout with plenty of natural light and a neutral décor, providing well-planned living spaces.

Featuring a good size living/dining room, fitted kitchen, two double bedrooms, bathroom and separate toilet. Further benefits include, good storage, no onward chain, communal gardens and residents parking.

Alexander Close is ideally located to take advantage of all that Strawberry Hill and Twickenham has to offer, from the delightful Radnor Gardens on the river to the ambient restaurants and charming riverside pubs and walks. Situated within easy access of both Richmond and Kingston with comprehensive amenities. Commuter links are excellent with two stations providing good links to London Waterloo, frequent bus routes and easy access to the M3 and M25 motorways and Heathrow Airport. The local area is well served for schools, both private and state-run.

Ground Rent £10 pa. Service Charge £960 pa. (All details concerning the terms of the lease and outgoings are subject to verification).

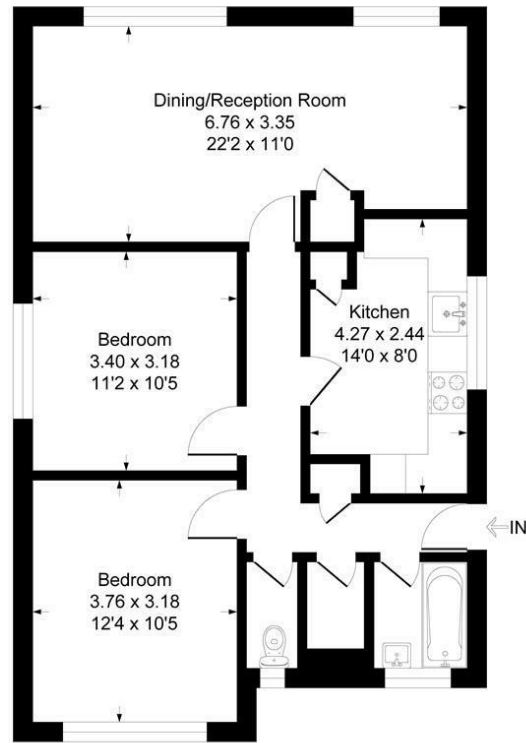
To arrange a viewing, please contact the vendors' Sole agents Chase Buchanan.





Alexander Close TW2

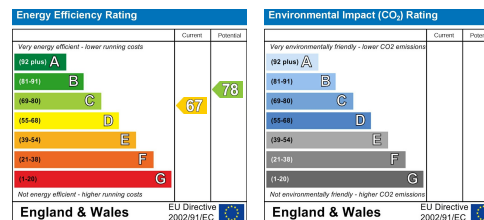
Approximate Gross Internal Floor Area = 70.1 sq m / 755 sq ft



First Floor

Illustration for identification purposes only, measurements are approximate, not to scale.

Care has been taken in the preparation of these particulars, however, their accuracy is not guaranteed and they do not form part of any contract. Measurements stated must be considered maximum.



For more information or to book a viewing, please contact:

020 8744 0101

twickenham@chasebuchanan.london

4 York Street, TW1 3LD

ChaseBuchanan